

N.E. 1/4  
SECTION 33, T.7N., R.2W., S.L.B.&M.

IN WEBER COUNTY & PLAIN CITY

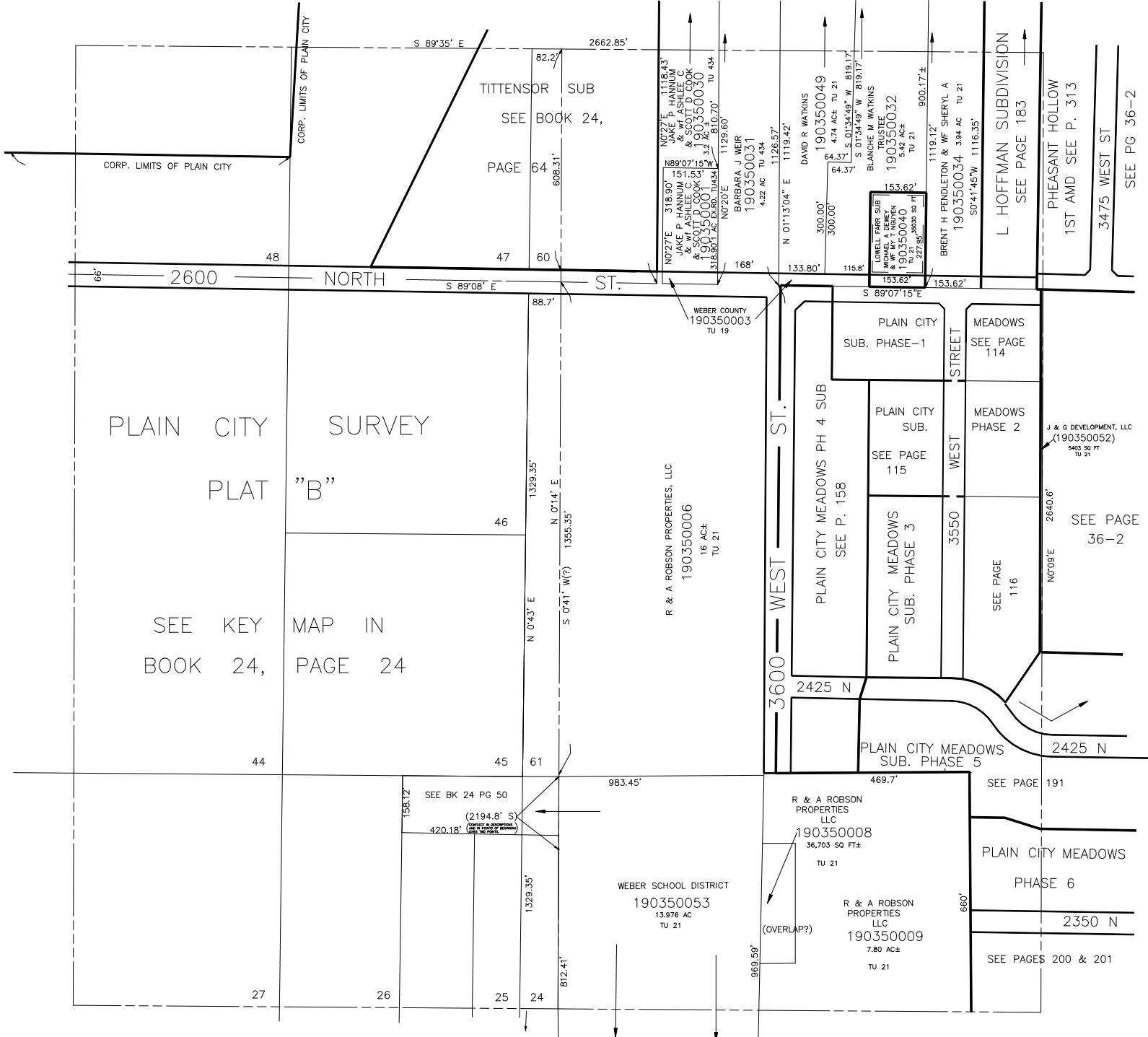
PREFIX:19-035

TAXING UNIT: 19, 21, 434

SCALE 1" = 200'

ALSO SEE PAGE 35-2

SEE PAGE 24



PLAIN CITY SURVEY  
PLAT "B"

SEE KEY MAP IN  
BOOK 24, PAGE 24